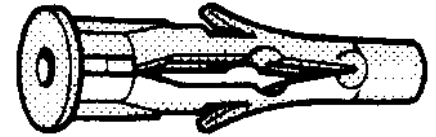
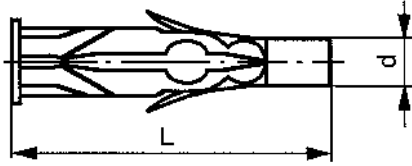


## Universal fixing

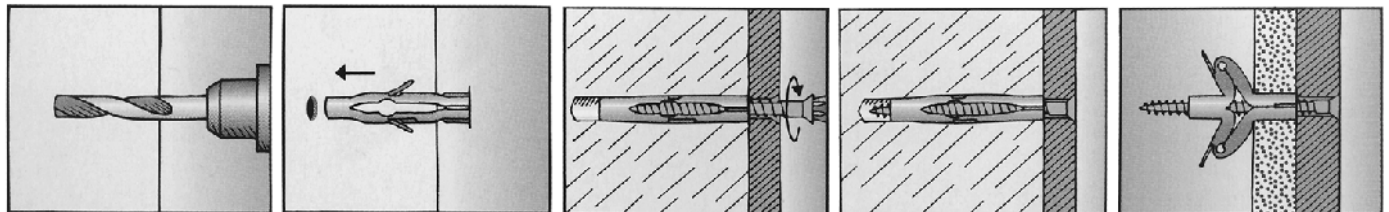


### Technical data

Type	FU 6x35	FU 6x45	FU 8x50	FU 10x60
d	6	6	8	10
L	35	45	50	60
Drill ø	6	6	8	10
Drill depth (min.)	45	55	60	70
Material thickness (min.)	6	6	6	6
Application in combination with:				
Chipboard screws	3-3,5	3-3,5	4-4,5	5-6
Pull-out force for wood screw/				
Pull-out force for chipboard screws				
Concrete C20/25	2/1	2/1	4/2	6/3
Brick Mz12	1,8/0,6	1,8/0,6	3,5/1,4	5,5/1,7
Sandlime brick KS12	1,8/0,8	1,8/0,8	3,5/1,7	5,5/2,1
Pumice grit V2	0,75/0,2	0,75/0,2	1,5/0,45	1,6/0,65
Cellular concrete PB2, PP2 (G2)	0,25/0,2	0,25/0,2	0,65/0,6	0,9/0,8
Cellular concrete PB4, PP4 (G4)	0,9/0,5	0,9/0,5	1,6/1,1	1,9/1,7
Ventilation stone Hlz12	-/0,9	-/0,9	-/1,1	-/1,5
Hollow sandlime brick KSL6	-/1	-/1	-/1,5	-/2
Plasterboard 10mm	-/0,4	-/0,4	-/0,45	-/0,45
Chipboard 10mm	-/1,2	-/1,2	-/1,4	-/2

- Pull-out force in kN at the largest possible screw diameter, (values in bold print), and a correct mounting of the plug in a supporting surface.
- It is advised to take a safetyfactor of  $\geq 7$ .

### Assembly sequence

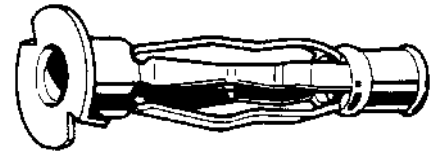
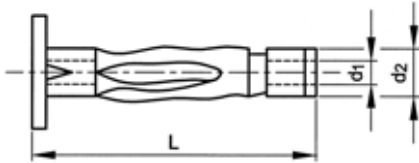


8

<b>63270 FISCHER Universal fixing type FU</b>		<b>N03A</b>
Material	Plastic Nylon (polyamide)	
Colour	Grey	
Packaging	Standard	
		

Type	☒	Art.number	Type	☒	Art.number	Type	☒	Art.number
FU 6X35	50	<a href="#">63270.060.035</a>	FU 8X50	50	<a href="#">63270.080.050</a>			
FU 6X45	50	<a href="#">63270.060.045</a>	FU 10X60	25	<a href="#">63270.100.060</a>			

## Screw anchor



### Technical data

Type	d <sub>1</sub>	L	d <sub>2</sub>	Drill ø	Grip range	Screwlength (min.)
40S4SV	M4	33	8	8	6-13	40
40SL4SV	M4	46	8	8	10-24	50
40XL4SV	M4	59	8	8	32-38	65
6E5SV	M5	36	11	11	3-13	40
6S5SV	M5	50	11	11	3-16	55
6SL5SV	M5	75	11	11	16-45	80
8E6SV	M6	34	13	13	3-13	40
8S6SV	M6	50	13	13	3-16	55
8SL6SV	M6	75	13	13	16-45	80

- Special features of MOLLY screw anchors:
- Ideally suited for cavity materials e.g. walls, building bricks, soft materials e.g. plasterboard, wood, chipboard, etc.
- Blind installation from one side with a screwdriver and key type MJ68 or handplier type BT2000.
- Permanent anchoring which can be used unlimitedly.
- Provided with pointed hooks preventing turning.
- Large contact area by spreaded wings.

#### 65110 MOLLY Screw anchor

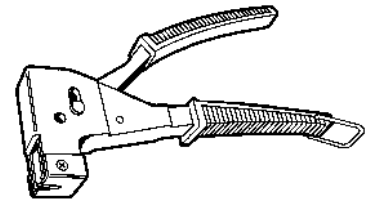
N07C

Thread	Metric thread
Material	Steel
Surface treatment	Zinc plated
Packaging	Standard



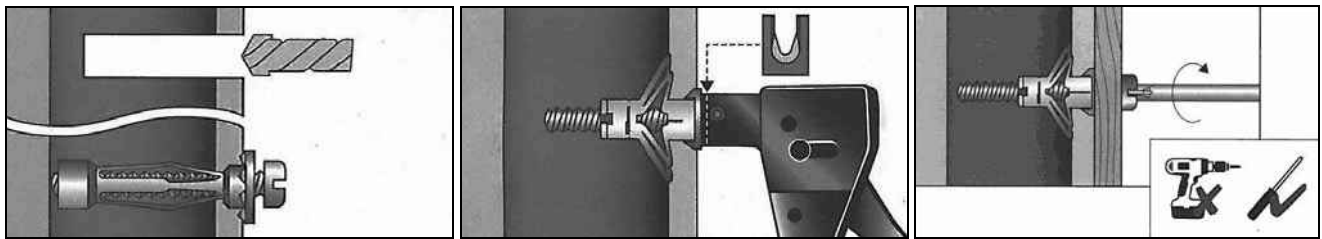
Type = d1 x L	☒	Art.number	Type = d1 x L	☒	Art.number	Type = d1 x L	☒	Art.number
40 S 4SV=M4X33	100	<a href="#">65110.040.033</a>	6 E 5SV=M5X36	100	<a href="#">65110.050.036</a>	8 E 6SV=M6X34	100	<a href="#">65110.060.034</a>
40 SL 4SV=M4X46	100	<a href="#">65110.040.046</a>	6 S 5SV=M5X50	100	<a href="#">65110.050.050</a>	8 S 6SV=M6X50	100	<a href="#">65110.060.050</a>
40 XL 4SV=M4X59	100	<a href="#">65110.040.059</a>	6 SL 5SV=M5X75	100	<a href="#">65110.050.075</a>	8 SL 6SV=M6X75	100	<a href="#">65110.060.075</a>

**Hand plier**



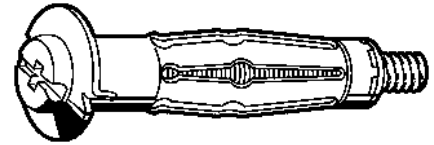
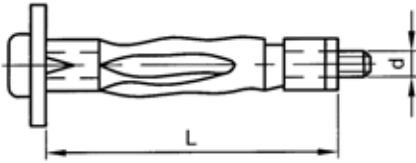
<b>65210</b>	<b>MOLLY Hand plier</b>	<b>N07C</b>
<b>Packaging</b>	Standard	
 		

**Assembly sequence**



Type	☒	Art.number	Type	☒	Art.number	Type	☒	Art.number
MT 2000	1	<a href="#">65210.001.775</a>						

## Cavity fixing

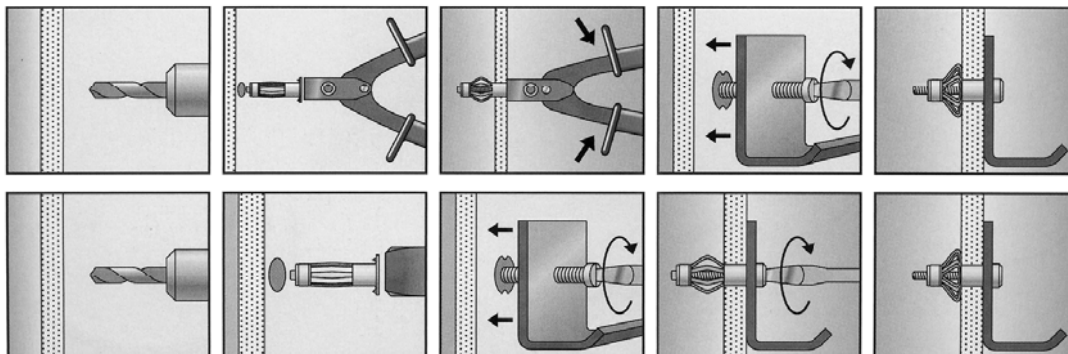


### Technical data

Type	d	L	Screw size	Drill ø	Drill depth (min.)	Material thickness (max.)	Structural part thickness (max.)
HM 4x32	M4	32	-	8	42	3-13	16
HM 4x32 S	M4	32	M4X40	8	42	3-13	16
HM 4x46 S	M4	46	M4X2	8	56	5-18	23
HM 4x59 S	M4	59	M4X66	8	69	35-42	16
HM 5x37 S	M5	37	M5X45	11	47	6-15	19
HM 5x52 S	M5	52	M5X60	11	62	7-21	24
HM 5x65 S	M5	65	M5X73	11	75	20-34	24
HM 6x37	M6	37	-	13	47	6-15	14
HM 6x37 S	M6	50	M6X60	13	62	10-21	24
HM 6x52 S	M6	52	M6X60	13	62	10-21	24
HM 6x65 S	M6	65	M6X70	13	75	20-34	24
HM 6x80	M6	80	-	13	90	38-50	24
HM 6x80 S	M6	80	M6X88	13	90	38-50	24
HM 8x55 SS	M8	55	M8X60	13	65	10-21	24

- HM4x32/ HM5x37/ HM6x37/ HM6x80 delivered without screw.
- HM8x55SS With hexagon head screw, assembly only by using professional nippers HM Z 1.

### Assembly sequence



8

63240 FISCHER Cavity fixing type HM/HM-S		N03A	
Thread	Metric thread		
Material	Steel		
Surface treatment	Zinc plated		
Packaging	Standard		
			

Type	☒	Art.number	Type	☒	Art.number	Type	☒	Art.number
HM4X32S	50	<a href="#">63240.040.132</a>	HM5X37S	50	<a href="#">63240.050.137</a>	HM6X52S	50	<a href="#">63240.060.152</a>
HM4X46S	50	<a href="#">63240.040.146</a>	HM5X52S	50	<a href="#">63240.050.152</a>	HM6X65S	50	<a href="#">63240.060.165</a>
HM4X54S	50	<a href="#">63240.040.154</a>	HM5X65S	50	<a href="#">63240.050.165</a>	HM6X80S	50	<a href="#">63240.060.180</a>
HM4X59S	50	<a href="#">63240.040.159</a>	HM6X37S	50	<a href="#">63240.060.137</a>	HM8X55S	50	<a href="#">63240.080.155</a>