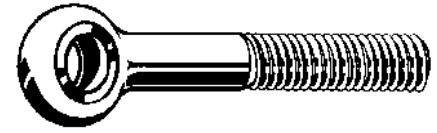
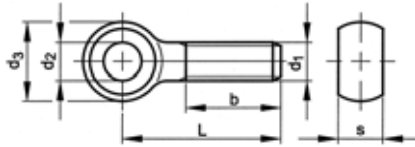


Eye bolt

DIN 444 B
NEN 2310 B



Technical data

d1	P	b (min.): L≤125mm	b (min.): 125mm<L≤200mm	b (min.): L>200mm	d ₂ (H9)	d ₃ (max.)	s (max.)
M6	1	18	-	-	6	14	7
M8	1,25	22	28	-	8	18	9
M10	1,5	26	32	-	10	20	12
M12	1,75	30	36	49	12	25	14
M16	2	38	44	57	16	32	17
M20	2,5	46	52	65	18	40	22
M24	3	54	60	73	22	45	25
M27	3	60	66	79	25	50	27
M30	3,5	66	72	85	28	55	30

5

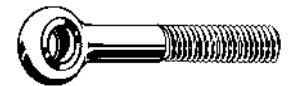
Article groups

Thread	Material	Class	Packaging	Code	Page
M	St	4.6	Standard	16180	5-4
M	St.St. A2		Standard	51790	5-5
M	St.St. A4		Standard	55790	5-5

16180 Eye bolt

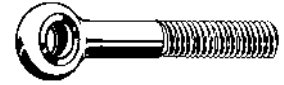
F11D

Thread Metric thread
Material Steel
Class 4.6
Packaging Standard



d1 x L	☒	Art.number	d1 x L	☒	Art.number	d1 x L	☒	Art.number
M6X30	25	16180.060.030	M12X60	10	16180.120.060	M20X140	5	16180.200.140
M6X40	25	16180.060.040	M12X70	10	16180.120.070	M20X150	5	16180.200.150
M6X50	25	16180.060.050	M12X80	10	16180.120.080	M20X160	5	16180.200.160
M6X60	25	16180.060.060	M12X90	10	16180.120.090	M20X180	5	16180.200.180
M6X70	25	16180.060.070	M12X100	10	16180.120.100	M20X200	5	16180.200.200
M6X80	25	16180.060.080	M12X110	10	16180.120.110	M24X80	5	16180.240.080
M8X40	25	16180.080.040	M12X120	10	16180.120.120	M24X100	5	16180.240.100
M8X45	25	16180.080.045	M12X130	10	16180.120.130	M24X110	5	16180.240.110
M8X50	25	16180.080.050	M12X140	10	16180.120.140	M24X120	5	16180.240.120
M8X60	25	16180.080.060	M12X150	10	16180.120.150	M24X130	5	16180.240.130
M8X70	25	16180.080.070	M16X60	10	16180.160.060	M24X140	5	16180.240.140
M8X80	25	16180.080.080	M16X70	10	16180.160.070	M24X150	5	16180.240.150
M8X90	25	16180.080.090	M16X80	10	16180.160.080	M24X160	5	16180.240.160
M8X100	25	16180.080.100	M16X90	10	16180.160.090	M24X180	5	16180.240.180
M8X110	25	16180.080.110	M16X100	10	16180.160.100	M24X200	5	16180.240.200
M8X120	25	16180.080.120	M16X110	10	16180.160.110	M24X220	5	16180.240.220
M8X130	25	16180.080.130	M16X120	10	16180.160.120	M27X120	5	16180.270.120
M8X140	25	16180.080.140	M16X130	10	16180.160.130	M27X140	5	16180.270.140
M10X40	25	16180.100.040	M16X140	10	16180.160.140	M27X160	5	16180.270.160
M10X50	25	16180.100.050	M16X150	10	16180.160.150	M27X180	5	16180.270.180
M10X60	25	16180.100.060	M16X160	10	16180.160.160	M27X200	5	16180.270.200
M10X65	25	16180.100.065	M16X180	10	16180.160.180	M30X120	3	16180.300.120
M10X70	25	16180.100.070	M16X200	10	16180.160.200	M30X140	3	16180.300.140
M10X80	25	16180.100.080	M20X60	5	16180.200.060	M30X160	3	16180.300.160
M10X90	25	16180.100.090	M20X80	5	16180.200.080	M30X180	3	16180.300.180
M10X100	25	16180.100.100	M20X100	5	16180.200.100	M30X200	3	16180.300.200
M10X110	25	16180.100.110	M20X110	5	16180.200.110			
M10X120	25	16180.100.120	M20X120	5	16180.200.120			
M10X130	25	16180.100.130	M20X130	5	16180.200.130			
M10X140	25	16180.100.140						

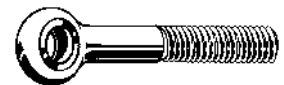
51790		Eye bolt			R09A
Thread	Metric thread				
Material	Stainless steel A2				
Packaging	Standard				



d1 x L	☒	Art.number	d1 x L	☒	Art.number	d1 x L	☒	Art.number
M6X30	10	51790.060.030	M10X90	10	51790.100.090	M16X180	3	51790.160.180
M6X35	10	51790.060.035	M10X100	10	51790.100.100	M16X200	3	51790.160.200
M6X40	10	51790.060.040	M10X110	5	51790.100.110			
M6X45	10	51790.060.045	M10X120	5	51790.100.120	M20X70 *	10	51790.200.070
M6X50	10	51790.060.050	M10X130	5	51790.100.130	M20X75	2	51790.200.075
M6X55	10	51790.060.055	M10X140	5	51790.100.140	M20X80	2	51790.200.080
M6X60	10	51790.060.060				M20X90	2	51790.200.090
M6X70	10	51790.060.070	M12X50	5	51790.120.050	M20X100	2	51790.200.100
M6X80	10	51790.060.080	M12X55	5	51790.120.055	M20X110	2	51790.200.110
			M12X60	5	51790.120.060	M20X120	2	51790.200.120
M8X30	10	51790.080.030	M12X65	5	51790.120.065	M20X130	2	51790.200.130
M8X35	10	51790.080.035	M12X70	5	51790.120.070	M20X140	2	51790.200.140
M8X40	10	51790.080.040	M12X75	5	51790.120.075	M20X150	1	51790.200.150
M8X45	10	51790.080.045	M12X80	5	51790.120.080	M20X160	1	51790.200.160
M8X50	10	51790.080.050	M12X90	5	51790.120.090	M20X180	1	51790.200.180
M8X55	10	51790.080.055	M12X100	5	51790.120.100	M20X200	1	51790.200.200
M8X60	10	51790.080.060	M12X110	3	51790.120.110			
M8X70	10	51790.080.070	M12X120	3	51790.120.120	M24X80	3	51790.240.080
M8X75	10	51790.080.075	M12X130	3	51790.120.130	M24X90	3	51790.240.090
M8X80	10	51790.080.080	M12X140	3	51790.120.140	M24X110	3	51790.240.110
M8X90	10	51790.080.090	M12X150	3	51790.120.150	M24X120	3	51790.240.120
M8X100	10	51790.080.100				M24X130	3	51790.240.130
M8X110	5	51790.080.110	M16X60	5	51790.160.060	M24X140	3	51790.240.140
M8X120	5	51790.080.120	M16X65	5	51790.160.065	M24X150	3	51790.240.150
M8X140	5	51790.080.140	M16X70	5	51790.160.070	M24X180	3	51790.240.180
			M16X75 *	25	51790.160.075	M24X200	3	51790.240.200
M10X40	10	51790.100.040	M16X80	5	51790.160.080	M24X220	3	51790.240.220
M10X45	10	51790.100.045	M16X90	5	51790.160.090			
M10X50	10	51790.100.050	M16X100	5	51790.160.100	M27X120	3	51790.270.120
M10X55	10	51790.100.055	M16X110	5	51790.160.110	M27X160	3	51790.270.160
M10X60	10	51790.100.060	M16X120	3	51790.160.120	M27X180	3	51790.270.180
M10X65	10	51790.100.065	M16X130	3	51790.160.130	M27X200	3	51790.270.200
M10X70	10	51790.100.070	M16X140	3	51790.160.140			
M10X75	10	51790.100.075	M16X150	3	51790.160.150			
M10X80	10	51790.100.080	M16X160	3	51790.160.160			

5

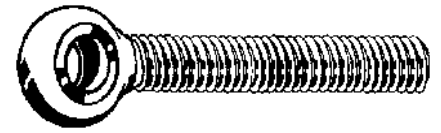
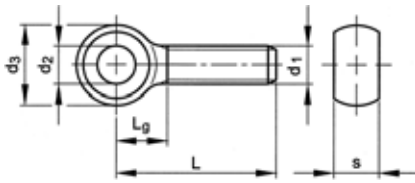
55790		Eye bolt			R49A
Thread	Metric thread				
Material	Stainless steel A4				
Packaging	Standard				



d1 x L	☒	Art.number	d1 x L	☒	Art.number	d1 x L	☒	Art.number
M6X30	10	55790.060.030	M10X65 *	25	55790.100.065	M16X70	5	55790.160.070
M6X35 *	50	55790.060.035	M10X70	10	55790.100.070	M16X75 *	25	55790.160.075
M6X40	10	55790.060.040	M10X75 *	25	55790.100.075	M16X80	5	55790.160.080
M6X45 *	50	55790.060.045	M10X80	10	55790.100.080	M16X90	5	55790.160.090
M6X50	10	55790.060.050	M10X90	10	55790.100.090	M16X100	5	55790.160.100
M6X55 *	50	55790.060.055	M10X100	10	55790.100.100	M16X110 *	25	55790.160.110
M6X60 *	50	55790.060.060	M10X110 *	25	55790.100.110	M16X120	3	55790.160.120
			M10X120 *	25	55790.100.120	M16X130	3	55790.160.130
M8X30	10	55790.080.030						
M8X35 *	50	55790.080.035	M12X50	5	55790.120.050	M20X70 *	10	55790.200.070
M8X40	10	55790.080.040	M12X55 *	25	55790.120.055	M20X75 *	10	55790.200.075
M8X45 *	50	55790.080.045	M12X60	5	55790.120.060	M20X80	2	55790.200.080
M8X50	10	55790.080.050	M12X65 *	25	55790.120.065	M20X90	2	55790.200.090
M8X60	10	55790.080.060	M12X70	5	55790.120.070	M20X100	2	55790.200.100
M8X65 *	50	55790.080.065	M12X75 *	25	55790.120.075	M20X120	2	55790.200.120
M8X70	10	55790.080.070	M12X80	5	55790.120.080			
M8X80	10	55790.080.080	M12X90	5	55790.120.090	M24X80 *	10	55790.240.080
M8X90	10	55790.080.090	M12X100	5	55790.120.100	M24X90 *	10	55790.240.090
M8X100	10	55790.080.100	M12X110 *	25	55790.120.110	M24X100	3	55790.240.100
			M12X120	3	55790.120.120	M24X110 *	10	55790.240.110
M10X40	10	55790.100.040	M12X130 *	25	55790.120.130	M24X120	3	55790.240.120
M10X45 *	25	55790.100.045	M12X150 *	10	55790.120.150	M24X130 *	10	55790.240.130
M10X50	10	55790.100.050				M24X140	3	55790.240.140
M10X55 *	25	55790.100.055	M16X60 *	25	55790.160.060	M24X150 *	10	55790.240.150
M10X60	10	55790.100.060	M16X65 *	25	55790.160.065			

Eye bolt fully threaded

DIN 444 LB
NEN 2310 B



Technical data

d1	P	Lg (max.)	d2 (H9)	d3 (max.)	s (max.)
M5	0,8	11	5	12	6
M6	1	14	6	14	7
M8	1,25	16	8	18	9
M10	1,5	18	10	20	12
M12	1,75	23	12	25	14
M16	2	27	16	32	17
M20	2,5	32	18	40	22

16182 Eye bolt fully threaded

F11D

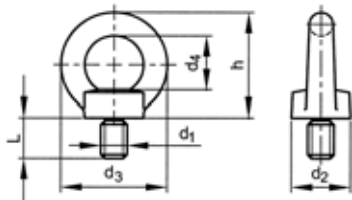
Thread Metric thread
Material Steel
Class 4.6
Surface treatment Zinc plated
Packaging Standard



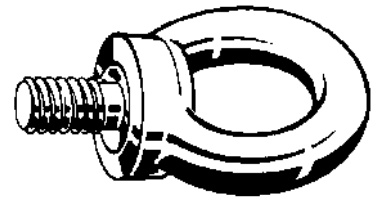
5

d1 x L	☒	Art.number	d1 x L	☒	Art.number	d1 x L	☒	Art.number
M5X25	50	16182.050.025	M10X80	25	16182.100.080	M16X110	10	16182.160.110
M5X35	50	16182.050.035	M10X100	25	16182.100.100	M16X120	10	16182.160.120
M6X30	25	16182.060.030	M10X120	25	16182.100.120	M16X140	10	16182.160.140
M6X40	25	16182.060.040	M10X140	25	16182.100.140	M16X160	10	16182.160.160
M6X50	25	16182.060.050	M12X60	10	16182.120.060	M16X180	10	16182.160.180
M8X40	25	16182.080.040	M12X70	10	16182.120.070	M16X200	10	16182.160.200
M8X50	25	16182.080.050	M12X80	10	16182.120.080	M20X100	5	16182.200.100
M8X60	25	16182.080.060	M12X100	10	16182.120.100	M20X120	5	16182.200.120
M8X80	25	16182.080.080	M12X110	10	16182.120.110	M20X140	5	16182.200.140
M10X40	25	16182.100.040	M12X120	10	16182.120.120	M20X150	5	16182.200.150
M10X50	25	16182.100.050	M12X140	10	16182.120.140	M20X160	5	16182.200.160
M10X60	25	16182.100.060	M16X70	10	16182.160.070	M20X180	5	16182.200.180
M10X70	25	16182.100.070	M16X80	10	16182.160.080	M20X200	5	16182.200.200
M10X75	25	16182.100.075	M16X90	10	16182.160.090			
			M16X100	10	16182.160.100			

Lifting eye bolt with CE marking



ISO 3266
DIN 580
NEN 1927
BS 4278



Technical data

d1	P	d ₂	d ₃	d ₄	h	L
M6 (#DIN)	1	20	36	20	36	13
M8	1,25	20	36	20	36	13
M10	1,5	25	45	25	45	17
M12	1,75	30	54	30	53	20,5
M14 (#DIN)	2	30	54	30	53	20,5
M16	2	35	63	35	62	27
M18 (#DIN)	2,5	35	63	35	62	27
M20	2,5	40	72	40	71	30
M22 (#DIN)	2,5	40	72	40	71	30
M24	3	50	90	50	90	36
M27 (#DIN)	3	50	90	50	90	36
M30	3,5	65	108	60	109	45
M33 (#DIN)	3,5	65	108	60	109	45
M36	4	75	126	70	128	54
M39 (#DIN)	4	75	126	70	128	54
M42	4,5	85	144	80	147	63
M45 (#DIN)	4,5	85	144	80	147	63
M48	5	100	166	90	168	68
M52 (#DIN)	5	110	184	100	187	78
M56	5,5	110	184	100	187	78
M64	6	120	206	110	208	90
M72x6	6	150	260	140	260	100

- If lifting eye bolts form part of lifting equipment, CE marking is necessary.
- Lifting eye bolt do not require CE marking if not used for lifting (as towing eyes for example) or is only used once for lifting (such as for moving machines).

Maximum load L (N)

		M6	M8	M10	M12	M14	M16	M18	M20	M22	M24	M27
1 x bolt		900	1400	2300	3400	5000	7000	9300	12000	15000	18000	25000
2 x bolt		600	1000	1700	2400	3500	5000	6500	8600	10500	12900	18300

		M30	M33	M36	M39	M42	M45	M48	M52	M56	M64	M72x6
1 x bolt		32000	42000	46000	60000	63000	78000	86000	99000	115000	160000	200000
2 x bolt		23000	30500	33000	44000	45000	55000	61000	71000	82000	110000	140000

Article groups

Thread	Material	Surface treatment	Packaging	Code	Page
M	St C15E		Standard	16000	5-8
M	St C15E	Zipl	Standard	16010	5-8
M	St.St. A2		Standard	51940	5-8
M	St.St. A4		Standard	55940	5-8

16000 Lifting eye bolt with CE marking		F11E
Thread	Metric thread	 
Material	Steel C15E	
Packaging	Standard	


d1	☒	Art.number	d1	☒	Art.number	d1	☒	Art.number
M6	25	16000.060.001	M20	10	16000.200.001	M39	1	16000.390.001
M8	25	16000.080.001	M22	5	16000.220.001	M42	1	16000.420.001
M10	25	16000.100.001	M24	5	16000.240.001	M48	1	16000.480.001
M12	25	16000.120.001	M27	5	16000.270.001	M56	1	16000.560.001
M14	10	16000.140.001	M30	1	16000.300.001	M64	1	16000.640.001
M16	10	16000.160.001	M33	1	16000.330.001	M72X6,00	1	16000.720.001
M18	10	16000.180.001	M36	1	16000.360.001			

16010 Lifting eye bolt with CE marking		F11E
Thread	Metric thread	 
Material	Steel C15E	
Surface treatment	Zinc plated	
Packaging	Standard	

d1	☒	Art.number	d1	☒	Art.number	d1	☒	Art.number
M6	25	16010.060.001	M20	10	16010.200.001	M42	1	16010.420.001
M8	25	16010.080.001	M24	5	16010.240.001	M45	1	16010.450.001
M10	25	16010.100.001	M27	5	16010.270.001	M48	1	16010.480.001
M12	25	16010.120.001	M30	1	16010.300.001	M52	1	16010.520.001
M14	10	16010.140.001	M33	1	16010.330.001	M56	1	16010.560.001
M16	10	16010.160.001	M36	1	16010.360.001	M64	1	16010.640.001
M18	10	16010.180.001	M39	1	16010.390.001			

51940 Lifting eye bolt with CE marking		R09A
Thread	Metric thread	 
Material	Stainless steel A2	
Packaging	Standard	
	ISO ≈3266	
	DIN ≈580	
	NEN ≈1927	
	BS ≈4278	

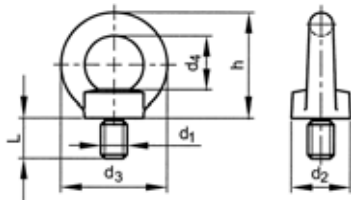
d1	☒	Art.number	d1	☒	Art.number	d1	☒	Art.number
M6	10	51940.060.001	M12	10	51940.120.001	M24	3	51940.240.001
M8	10	51940.080.001	M16	5	51940.160.001	M27	3	51940.270.001
M10	10	51940.100.001	M20	5	51940.200.001	M30	1	51940.300.001

55940 Lifting eye bolt with CE marking		R49A
Thread	Metric thread	 
Material	Stainless steel A4	
Packaging	Standard	
	ISO ≈3266	
	DIN ≈580	
	NEN ≈1927	
	BS ≈4278	

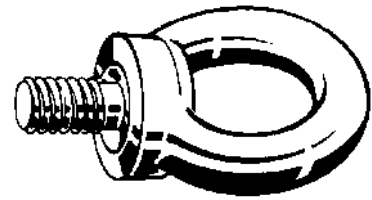
d1	☒	Art.number	d1	☒	Art.number	d1	☒	Art.number
M6	10	55940.060.001	M12	10	55940.120.001	M24	3	55940.240.001
M8	10	55940.080.001	M16	5	55940.160.001	M27	3	55940.270.001
M10	10	55940.100.001	M20	5	55940.200.001			

5

Lifting eye bolt non-metric



DIN ≈580 (1957)
NEN ≈2347 (1960)



Technical data

d1	Threads per inch	d2	d3	d4	h	L
5/16	18	20	36	20	36	13
3/8	16	25	45	25	45	17
1/2	12	30	54	30	53	22
5/8	11	35	63	35	62	27
3/4	10	40	72	40	71	30
7/8	9	45	81	45	81	35
1.IN.	8	50	90	50	90	36
1.1/4	7	65	108	60	109	45
1.1/2	6	75	126	70	128	55
1.3/4	5	100	166	90	168	70
2.IN.	4,5	100	166	90	168	70

- Whitworth thread (BSW) is not internationally recommended. It is advised to use metric (M).
- C15 material has been standardised and has a minimum impact strength of 80 Joule (ISO-testpiece) resp. 90 Joule (DIN-testpiece).

5

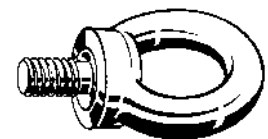
Maximum load L (N)

		5/16	3/8	1/2	5/8	3/4	7/8	1.IN.	1.1/4	1.1/2	1.3/4	2.IN.
1 x bolt		1400	2300	3400	7000	12000	18000	18000	46000	63000	86000	115000
2 x bolt		1000	1700	2400	5000	8600	12900	12900	33000	45000	61000	82000

16040 Lifting eye bolt non-metric

X08A

Thread British Standard Whitworth
Material Steel C15
Packaging Standard



d1	☒	Art.number	d1	☒	Art.number	d1	☒	Art.number
5/16	25	16040.079.001	3/4	10	16040.191.001	1.1/2	1	16040.381.001
3/8	25	16040.096.001	7/8	5	16040.222.001	1.3/4	1	16040.444.001
1/2	25	16040.127.001	1.IN.	5	16040.254.001	2.IN.	1	16040.508.001
5/8	10	16040.158.001	1.1/4	1	16040.317.001			