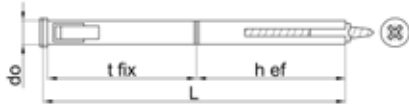


Frame fixing type F-S

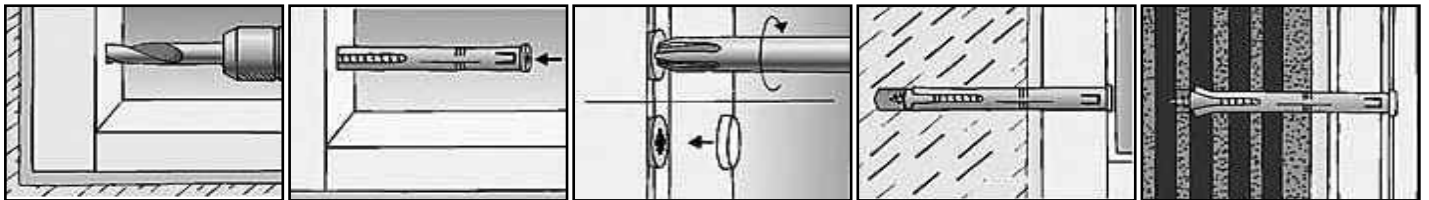


Technical data

Type	F 10 S 75	F 10 S 100	F 10 S 120	F 10 S 140	F 10 S 165
d_o	10	10	10	10	10
L	75	100	120	140	165
Min. t_d	90	115	135	155	180
h_{ef}	50	50	50	50	50
t_{fix}	15	40	60	80	105

- d_o = Nominal diameter of drill bit
- Min. t_d = Recommended drilling depth
- h_{ef} = Effective anchorage depth
- t_{fix} = Grip range

Assembly sequence



63191 FISCHER Frame fixing type F-S

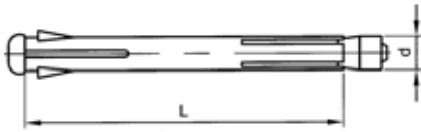
N03A

Material Plastic Nylon (polyamide)
Colour Grey
Packaging Standard



Type	☒	Art.number	Type	☒	Art.number	Type	☒	Art.number
F 10 S 75	50	63191.100.075	F 10 S 120	50	63191.100.120	F 10 S 165	50	63191.100.165
F 10 S 100	50	63191.100.100	F 10 S 140	50	63191.100.140			

Frame fixing type F-M

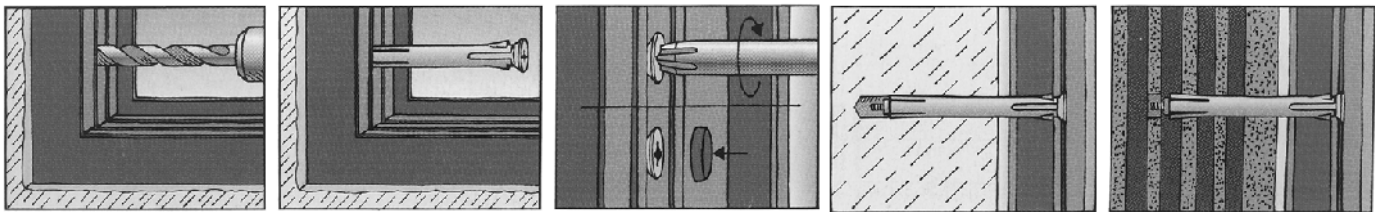


Technical data

Type	F 8 M 72	F 8 M 92	F 8 M 112	F 8 M 132	F 10 M 72	F 10 M 92	F 10 M 112	F 10 M 132	F 10 M 152	F 10 M 182	F 10 M 202
d	8	8	8	8	10	10	10	10	10	10	10
L	72	92	112	132	72	92	112	132	152	182	202
Drill ø	8	8	8	8	10	10	10	10	10	10	10
Drill depth (min.)	90	110	130	150	90	110	130	150	170	200	220
Grip range (max.)	42	62	82	102	42	62	82	102	122	152	172
Pull-out force in kN											
Concrete ≥ C20/25	-	-	-	-	5,5	5,5	5,5	-	5,5	5,5	5,5
Brick ≥ Mz12	-	-	-	-	5,1	5,1	5,1	5,1	5,1	5,1	5,1
Sandlime brick ≥ KSV12	-	-	-	-	5,1	5,1	5,1	5,1	5,1	5,1	5,1
Pumice grit ≥V2	-	-	-	-	1,9	1,9	1,9	1,9	1,9	1,9	1,9
Hollow sandlime brick ≥ KSL6	-	-	-	-	2,2	2,2	2,2	2,2	2,2	2,2	2,2

- Fixing sleeve aluminium-zinc coated with steel zinc plated, yellow passivated screw with Pozidriv (Z) cross recessed head.
- It is advised to take a safety factor: 4.

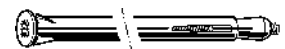
Assembly sequence



63190 FISCHER Frame fixing type F-M

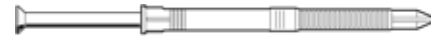
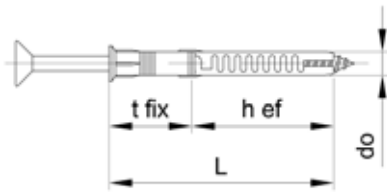
N03A

Material: Steel
Packaging: Standard



Type	☒	Art.number	Type	☒	Art.number	Type	☒	Art.number
F 8 M 72	100	63190.080.072	F 10 M 72	100	63190.100.072	F 10 M 152	100	63190.100.152
F 8 M 92	100	63190.080.092	F 10 M 92	100	63190.100.092	F 10 M 182	50	63190.100.182
F 8 M 112	100	63190.080.112	F 10 M 112	100	63190.100.112	F 10 M 202	50	63190.100.202
F 8 M 132	100	63190.080.132	F 10 M 132	100	63190.100.132			

Frame fixing type FUR-T

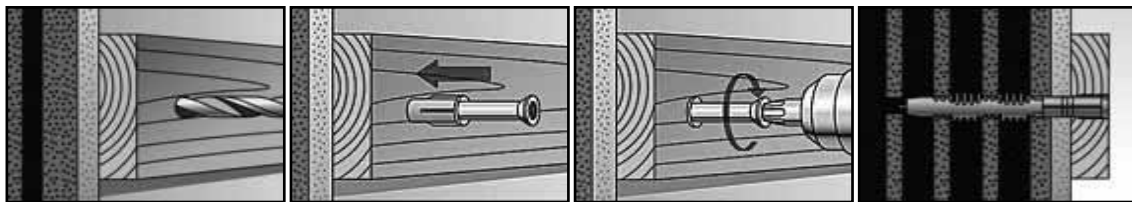


Technical data

do x L	Min. t _d	h _{ef}	t _{fix}	Socket
8x100	110	70	30	T30
8x120	130	70	50	T30
10x100	110	70	30	T40
10x115	125	70	45	T40
10x135	145	70	65	T40

- d_o = Nominal diameter of drill bit
- Min. t_d = Recommended drilling depth
- h_{ef} = Effective anchorage depth
- t_{fix} = Grip range

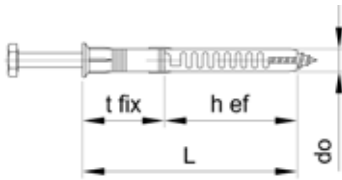
Assembly sequence



63195 FISCHER Frame fixing type FUR-T		N03A
Material	Plastic Nylon (polyamide)	 
Colour	Grey	
Packaging	Standard	

Drill ø x L	☒	Art.number	Drill ø x L	☒	Art.number	Drill ø x L	☒	Art.number
8X100MM	50	63195.080.100	10X100MM	50	63195.100.100	10X135MM	50	63195.100.135
8X120MM	50	63195.080.120	10X115MM	50	63195.100.115			

Frame fixing type FUR-SS



Technical data

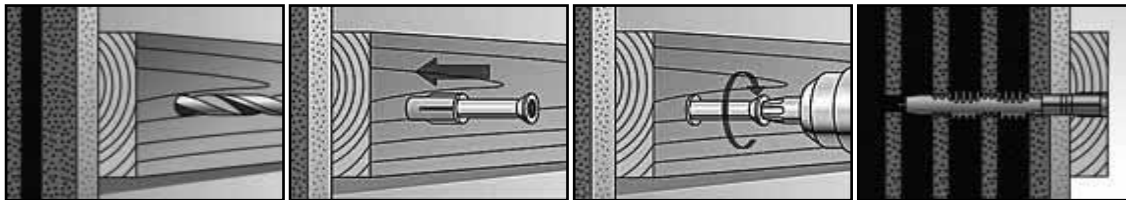
do x L	Min. t _d	h _{ef}	t _{fix}
8x80	90	70	10
8x100	110	70	30
8x120	130	70	50
10x80	90	70	10

do x L	Min. t _d	h _{ef}	t _{fix}
10x100	110	70	30
10x115	125	70	45
10x135	145	70	65
10x160	170	70	90

do x L	Min. t _d	h _{ef}	t _{fix}
10x185	195	70	115
10x200	210	70	130
10x230	240	70	160

- d₀ = Nominal diameter of drill bit
- Min. t_d = Recommended drilling depth
- h_{ef} = Effective anchorage depth
- t_{fix} = Grip range

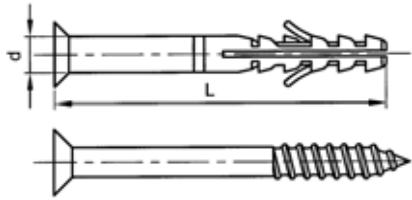
Assembly sequence



63196	FISCHER Frame fixing type FUR-SS	N03A
Material	Plastic Nylon (polyamide)	
Colour	Grey	
Packaging	Standard	
		

Drill ø x L	☒	Art.number	Drill ø x L	☒	Art.number	Drill ø x L	☒	Art.number
8X80MM	50	63196.080.080	10X100MM	50	63196.100.100	10X185MM	50	63196.100.185
8X100MM	50	63196.080.100	10X115MM	50	63196.100.115	10X200MM	50	63196.100.200
8X120MM	50	63196.080.120	10X135MM	50	63196.100.135	10X230MM	50	63196.100.230
10X80MM	50	63196.100.080	10X160MM	50	63196.100.160			

Frame fixing type SXR-T

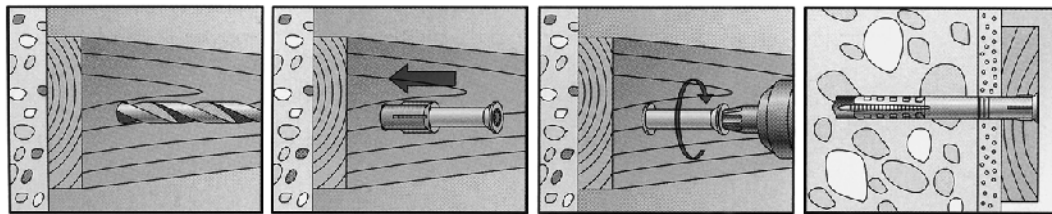


Technical data

do x L	Min. t _d	h _{ef}	t _{fix}	Socket
80x60	70	50	10	T30
80x80	90	50	30	T30
80x100	110	50	50	T30
80x120	130	50	70	T30
10x80	90	50	30	No.40
10x100	110	50	50	No.40
10x120	130	50	70	No.40
10x140	150	50	90	No.40
10x160	170	50	110	No.40

- d_o = Nominal diameter of drill bit.
- Min. t_d = Recommended drilling depth.
- h_{ef} = Effective anchorage depth.
- t_{fix} = Grip range.

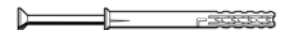
Assembly sequence



63192 FISCHER Frame fixing type SXR-T

N03A

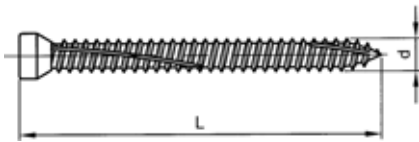
Material Plastic Nylon (polyamide)
Colour Grey
Packaging Standard



8

Drill ø x L	☒	Art.number	Drill ø x L	☒	Art.number	Drill ø x L	☒	Art.number
8X60 T	50	63192.080.060	SXR 8X120 T	50	63192.080.120	10X120 T	50	63192.100.120
8X80 T	50	63192.080.080	10X80 T	50	63192.100.080	10X140 T	50	63192.100.140
SXR 8X100 T	50	63192.080.100	10X100 T	50	63192.100.100	10X160 T	50	63192.100.160

Window frame screw

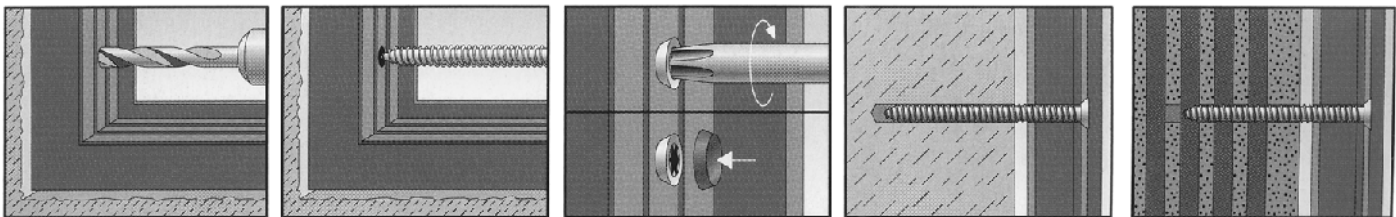


Technical data

Type	d	L	Drill ø
7,5x72	7,5	72	6
7,5x92	7,5	92	6
7,5x112	7,5	112	6
7,5x132	7,5	132	6
7,5x152	7,5	152	6
7,5x182	7,5	182	6
7,5x212	7,5	212	6

- Suitable for concrete, solid brick, sand lime solid bricks, perforated bricks, sand lime perforated bricks, hollow blocks, solid pumice, aircrete, natural stone etc.

Assembly sequence



Article groups

Material	Surface treatment		Packaging	Code	Page
St	Zipl	FFSZ	Standard	63560	8-39
St	Zipl	FFS	Standard	63562	8-39

63560 FISCHER Window frame screw type FFSZ - Head 7,5/TX 25

N03A

Material Steel
 Surface treatment Zinc plated
 Packaging Standard



Type	☒	Art.number	Type	☒	Art.number	Type	☒	Art.number
FFSZ 7,5X72	100	63560.075.072	FFSZ 7,5X112	100	63560.075.112	FFSZ 7,5X212	100	63560.075.212
FFSZ 7,5X92	100	63560.075.092	FFSZ 7,5X132	100	63560.075.132			

63562 FISCHER Window frame screw type FFS - Head 11,5/TX 30

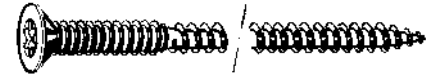
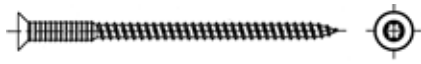
N03A

Material Steel
 Surface treatment Zinc plated
 Packaging Standard



Type	☒	Art.number	Type	☒	Art.number	Type	☒	Art.number
FFS 7,5X72	100	63562.075.072	FFS 7,5X132	100	63562.075.132	FFS 7,5X212	100	63562.075.212
FFS 7,5X92	100	63562.075.092	FFS 7,5X152	100	63562.075.152			
FFS 7,5X112	100	63562.075.112	FFS 7,5X182	100	63562.075.182			

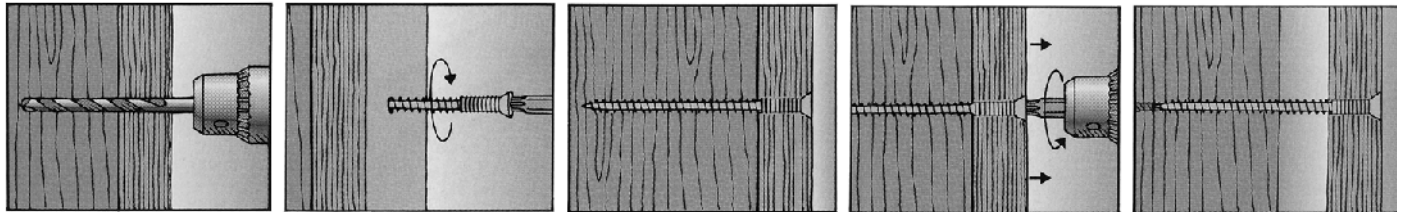
Adjustable screw



Technical data

Type	JS 6x110
Socket	No.40
Drill ø	5
Drill depth (min.)	50-110
Assembly depth (min.)	30
Stepless adjustment	0-55
Wood thickness (max.)	25

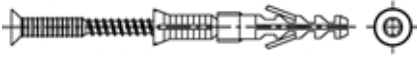
Assembly sequence



63601 FISCHER Adjustable screw type JS		N03B
Material	Steel	
Surface treatment	Zinc plated	
Packaging	Standard	
		

Type	✉	Art.number	Type	✉	Art.number	Type	✉	Art.number
JS 6X110MM	✉	50		✉	63601.060.110		✉	

Adjustable fixing

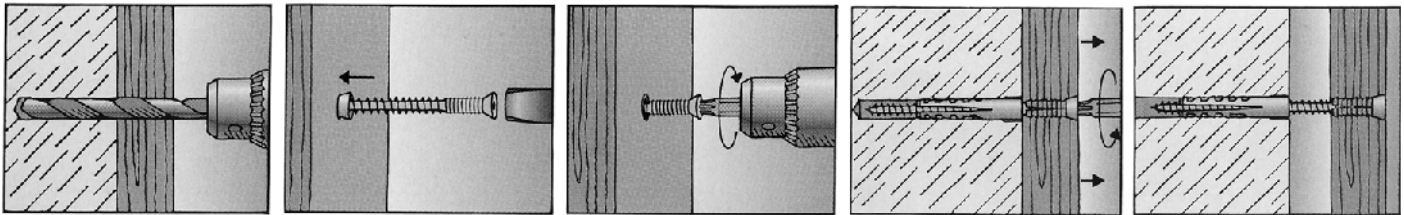


Technical data

Type	S10J75S
Plug length	75
Socket	No.40
Drill ø	10
Drill depth (min.)	115
Assembly depth (min.)	50
Stepless adjustment	0-30
Wood thickness (max.)	25

- Adjustable fixing type S10J75S for assembly for wood on stone.
- With adjustable screw type JS 6 x 110, steel zinc plated, yellow passivated.

Assembly sequence



63600 FISCHER Adjustable fixing type S10J75S

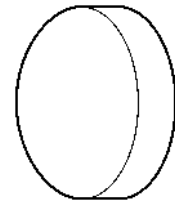
N03A

Material Plastic Nylon (polyamide)
Colour Grey
Packaging Standard



Type	✉	Art.number	Type	✉	Art.number	Type	✉	Art.number
S 10-J 75 S	50	63600.060.110						

Cover cap for window frame screws



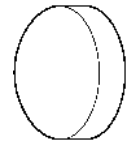
Technical data

Type	FSS A-W	FSS A-BR
d	14	14
h	4	4

63590 FISCHER Cover cap for window frame screws type FSS A

N03A

Material Plastic Polyamide (nylon)
Class 6
Packaging Standard



Type	☒	Art.number	Type	☒	Art.number	Type	☒	Art.number
WHITE	100	63590.000.011						
DARK BROWN	100	63590.000.019						