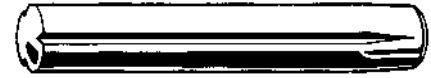
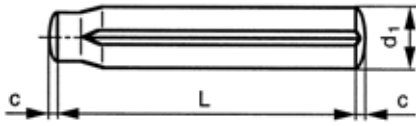


Grooved pin, full length parallel grooved with pilot

ISO 8739
DIN 1470
NEN 2601

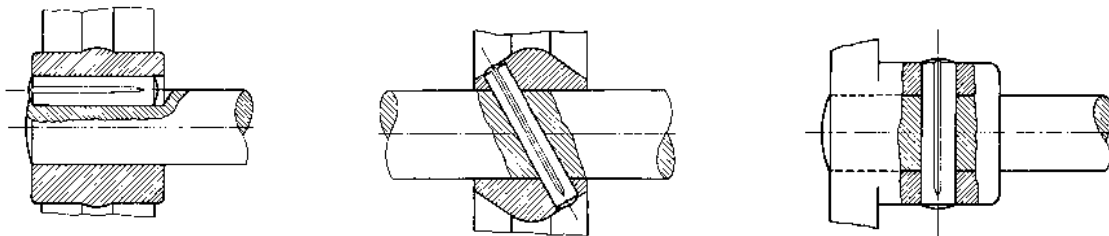


Technical data

d1	Tolerance	c ≈	V
1,5	h9	0,2	1,6
2	h9	0,25	2,85
2,5	h9	0,3	4,25
3	h9	0,4	6,15
4	h11	0,5	10,6
5	h11	0,6	16,5
6	h11	0,8	22,8
8	h11	1	40,5

- V = Shear strength double min. in kN.
- For the hole diameter d₁(nom.) with tolerance field H11 is recommended.
- The nominal length (L) does not include the rounded ends (tolerance js15).

Examples of application



39700 Grooved pin, full length parallel grooved with pilot

L11F

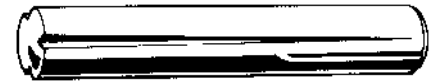
Material Free-cutting steel
Packaging Standard



d1 x L	☒	Art.number	d1 x L	☒	Art.number	d1 x L	☒	Art.number
1,5X4MM	200	39700.015.004	3X20MM	200	39700.030.020	6X16MM	100	39700.060.016
1,5X6MM	200	39700.015.006	3X30MM	200	39700.030.030	6X20MM	100	39700.060.020
1,5X8MM	200	39700.015.008				6X24MM	100	39700.060.024
1,5X10MM	200	39700.015.010	4X8MM	200	39700.040.008	6X30MM	100	39700.060.030
1,5X16MM	200	39700.015.016	4X10MM	200	39700.040.010	6X36MM	100	39700.060.036
			4X12MM	200	39700.040.012	6X40MM	100	39700.060.040
2X5MM	200	39700.020.005	4X16MM	200	39700.040.016	6X45MM	100	39700.060.045
2X6MM	200	39700.020.006	4X20MM	200	39700.040.020	6X50MM	100	39700.060.050
2X8MM	200	39700.020.008	4X24MM	200	39700.040.024	6X60MM	100	39700.060.060
2X10MM	200	39700.020.010	4X30MM	200	39700.040.030			
2X16MM	200	39700.020.016	4X36MM	100	39700.040.036	8X12MM	100	39700.080.012
2X20MM	200	39700.020.020	4X40MM	100	39700.040.040	8X16MM	100	39700.080.016
2X24MM	200	39700.020.024				8X20MM	100	39700.080.020
			5X12MM	200	39700.050.012	8X24MM	100	39700.080.024
2,5X10MM	200	39700.025.010	5X16MM	200	39700.050.016	8X30MM	100	39700.080.030
2,5X12MM	200	39700.025.012	5X20MM	100	39700.050.020	8X36MM	50	39700.080.036
2,5X16MM	200	39700.025.016	5X24MM	100	39700.050.024	8X40MM	50	39700.080.040
2,5X20MM	200	39700.025.020	5X30MM	100	39700.050.030	8X45MM	50	39700.080.045
			5X36MM	100	39700.050.036	8X50MM	50	39700.080.050
3X10MM	200	39700.030.010	5X40MM	100	39700.050.040	8X60MM	50	39700.080.060
3X12MM	200	39700.030.012				8X70MM	50	39700.080.070
3X16MM	200	39700.030.016	6X10MM	100	39700.060.010			

Grooved pin, full length taper grooved

ISO 8744
 DIN 1471
 NEN 2602

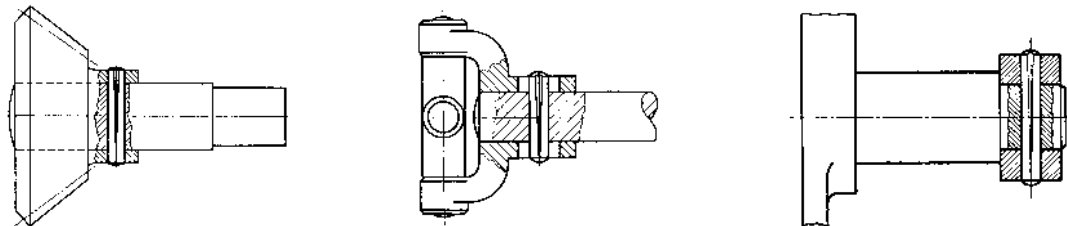


Technical data

d1	Tolerance	c ≈	V
1,5	h9	0,2	1,6
2	h9	0,25	2,85
2,5	h9	0,3	4,25
3	h9	0,4	6,15
4	h11	0,5	10,6
5	h11	0,63	16,5
6	h11	0,8	22,8
8	h11	1	40,5

- V = Shear strength double min. in kN.
- For the hole diameter d₁(nom.) with tolerance field H11 is recommended.
- The nominal length (L) does not include the rounded ends (tolerance js15).

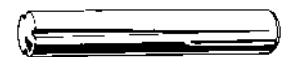
Examples of application



39710 Grooved pin, full length taper grooved

L11F

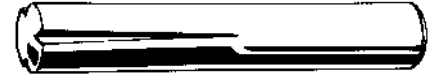
Material Free-cutting steel
Packaging Standard



d1 x L	☒	Art.number	d1 x L	☒	Art.number	d1 x L	☒	Art.number
1,5X4MM	200	39710.015.004	3X6MM	200	39710.030.006	5X40MM	100	39710.050.040
1,5X5MM	200	39710.015.005	3X8MM	200	39710.030.008			
1,5X8MM	200	39710.015.008	3X10MM	200	39710.030.010	6X10MM	100	39710.060.010
1,5X10MM	200	39710.015.010	3X12MM	200	39710.030.012	6X12MM	100	39710.060.012
1,5X16MM	200	39710.015.016	3X16MM	200	39710.030.016	6X16MM	100	39710.060.016
1,5X20MM	200	39710.015.020	3X20MM	200	39710.030.020	6X20MM	100	39710.060.020
			3X24MM	200	39710.030.024	6X24MM	100	39710.060.024
2X5MM	200	39710.020.005				6X30MM	100	39710.060.030
2X6MM	200	39710.020.006	4X8MM	200	39710.040.008	6X40MM	100	39710.060.040
2X8MM	200	39710.020.008	4X10MM	200	39710.040.010	6X45MM	100	39710.060.045
2X10MM	200	39710.020.010	4X12MM	200	39710.040.012	6X50MM	100	39710.060.050
2X12MM	200	39710.020.012	4X16MM	200	39710.040.016	6X60MM	100	39710.060.060
2X16MM	200	39710.020.016	4X20MM	200	39710.040.020			
2X20MM	200	39710.020.020	4X24MM	200	39710.040.024	8X12MM	100	39710.080.012
2X24MM	200	39710.020.024	4X30MM	200	39710.040.030	8X16MM	100	39710.080.016
2X30MM	200	39710.020.030	4X36MM	100	39710.040.036	8X20MM	100	39710.080.020
			4X40MM	100	39710.040.040	8X24MM	100	39710.080.024
2,5X6MM	200	39710.025.006				8X30MM	100	39710.080.030
2,5X8MM	200	39710.025.008	5X10MM	200	39710.050.010	8X40MM	50	39710.080.040
2,5X10MM	200	39710.025.010	5X12MM	200	39710.050.012	8X50MM	50	39710.080.050
2,5X12MM	200	39710.025.012	5X16MM	200	39710.050.016	8X60MM	50	39710.080.060
2,5X16MM	200	39710.025.016	5X20MM	100	39710.050.020	8X70MM	50	39710.080.070
2,5X20MM	200	39710.025.020	5X24MM	100	39710.050.024			
2,5X30MM	200	39710.025.030	5X30MM	100	39710.050.030			
			5X36MM	100	39710.050.036			

Grooved pin, half length taper grooved

ISO 8745
DIN 1472
NEN 2603

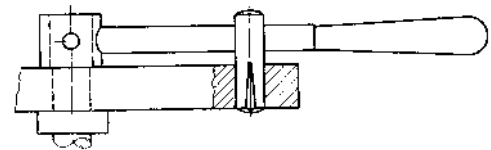
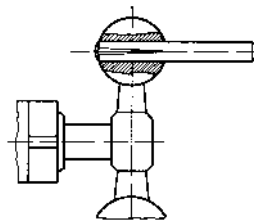
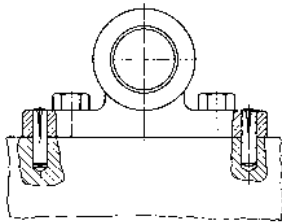


Technical data

d1	Tolerance	c ≈	V
1,5	h9	0,2	1,6
2	h9	0,25	2,85
2,5	h9	0,3	4,25
3	h9	0,4	6,15
4	h11	0,5	10,6
5	h11	0,6	16,5
6	h11	0,8	22,8
8	h11	1	40,5

- V = Shear strength double min. in kN.
- For the hole diameter d₁(nom.) with tolerance field H11 is recommended.
- The nominal length (L) does not include the rounded ends (tolerance js15).

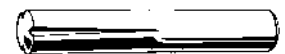
Examples of application



39720 Grooved pin, half length taper grooved

L11F

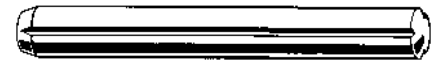
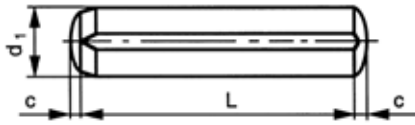
Material Free-cutting steel
Packaging Standard



d1 x L	☒	Art.number	d1 x L	☒	Art.number	d1 x L	☒	Art.number
1,5X4MM	200	39720.015.004	3X24MM	200	39720.030.024	6X12MM	100	39720.060.012
1,5X6MM	200	39720.015.006	3X30MM	200	39720.030.030	6X16MM	100	39720.060.016
1,5X8MM	200	39720.015.008				6X20MM	100	39720.060.020
1,5X12MM	200	39720.015.012	4X8MM	200	39720.040.008	6X24MM	100	39720.060.024
1,5X16MM	200	39720.015.016	4X10MM	200	39720.040.010	6X30MM	100	39720.060.030
			4X12MM	200	39720.040.012	6X36MM	100	39720.060.036
2X6MM	200	39720.020.006	4X16MM	200	39720.040.016	6X40MM	100	39720.060.040
2X8MM	200	39720.020.008	4X20MM	200	39720.040.020	6X50MM	100	39720.060.050
2X10MM	200	39720.020.010	4X24MM	200	39720.040.024	6X60MM	100	39720.060.060
2X12MM	200	39720.020.012	4X28MM	200	39720.040.028			
2X16MM	200	39720.020.016	4X30MM	200	39720.040.030	8X12MM	100	39720.080.012
2X20MM	200	39720.020.020	4X36MM	100	39720.040.036	8X16MM	100	39720.080.016
						8X20MM	100	39720.080.020
2,5X6MM	200	39720.025.006	5X8MM	200	39720.050.008	8X24MM	100	39720.080.024
2,5X10MM	200	39720.025.010	5X10MM	200	39720.050.010	8X30MM	100	39720.080.030
2,5X12MM	200	39720.025.012	5X12MM	200	39720.050.012	8X36MM	50	39720.080.036
2,5X16MM	200	39720.025.016	5X16MM	200	39720.050.016	8X40MM	50	39720.080.040
			5X20MM	100	39720.050.020	8X45MM	50	39720.080.045
3X8MM	200	39720.030.008	5X24MM	100	39720.050.024	8X50MM	50	39720.080.050
3X10MM	200	39720.030.010	5X30MM	100	39720.050.030	8X60MM	50	39720.080.060
3X12MM	200	39720.030.012	5X40MM	100	39720.050.040	8X70MM	50	39720.080.070
3X16MM	200	39720.030.016						
3X20MM	200	39720.030.020	6X10MM	100	39720.060.010			

Grooved pin, full length parallel grooved with chamfer

ISO 8740
 DIN 1473
 NEN 2604

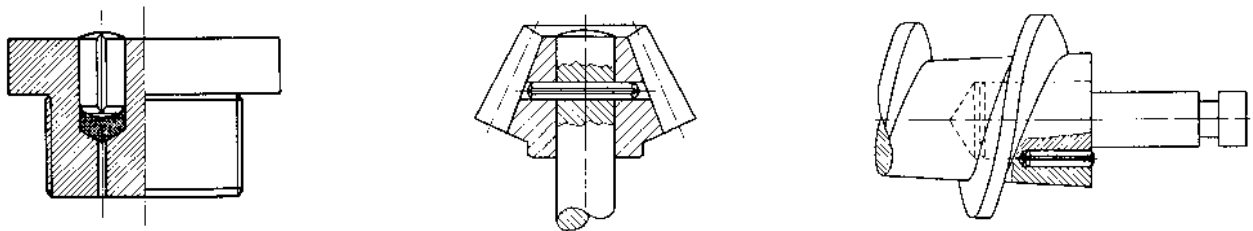


Technical data

d1	Tolerance	c ≈	V
1,5	h9	0,2	1,6
2	h9	0,25	2,85
2,5	h9	0,3	4,25
3	h9	0,4	6,15
4	h11	0,4	10,6
5	h11	0,6	16,5
6	h11	0,8	22,8
8	h11	1	40,5

- V = Shear strength double min. in kN.
- For the hole diameter d_1 (nom.) with tolerance field H11 is recommended.
- The nominal length (L) does not include the rounded ends (tolerance js15).

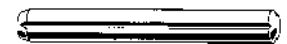
Examples of application



39730 Grooved pin, full length parallel grooved with chamfer

L11F

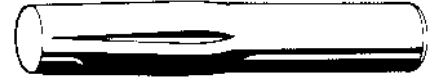
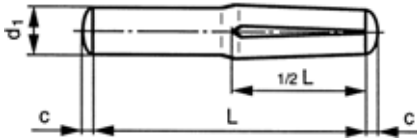
Material Free-cutting steel
Packaging Standard



d1 x L	☒	Art.number	d1 x L	☒	Art.number	d1 x L	☒	Art.number
1,5X5MM	200	39730.015.005	3X12MM	200	39730.030.012	6X10MM	100	39730.060.010
1,5X6MM	200	39730.015.006	3X16MM	200	39730.030.016	6X12MM	100	39730.060.012
1,5X8MM	200	39730.015.008	3X20MM	200	39730.030.020	6X16MM	100	39730.060.016
1,5X10MM	200	39730.015.010	3X24MM	200	39730.030.024	6X20MM	100	39730.060.020
1,5X12MM	200	39730.015.012	3X30MM	200	39730.030.030	6X24MM	100	39730.060.024
1,5X16MM	200	39730.015.016				6X30MM	100	39730.060.030
			4X8MM	200	39730.040.008	6X36MM	100	39730.060.036
2X5MM	200	39730.020.005	4X10MM	200	39730.040.010	6X40MM	100	39730.060.040
2X6MM	200	39730.020.006	4X12MM	200	39730.040.012	6X45MM	100	39730.060.045
2X8MM	200	39730.020.008	4X16MM	200	39730.040.016	6X50MM	100	39730.060.050
2X10MM	200	39730.020.010	4X20MM	200	39730.040.020	6X60MM	100	39730.060.060
2X12MM	200	39730.020.012	4X24MM	200	39730.040.024			
2X16MM	200	39730.020.016	4X30MM	200	39730.040.030	8X12MM	100	39730.080.012
2X20MM	200	39730.020.020	4X36MM	100	39730.040.036	8X16MM	100	39730.080.016
2X24MM	200	39730.020.024	4X40MM	100	39730.040.040	8X20MM	100	39730.080.020
2X30MM	200	39730.020.030				8X24MM	100	39730.080.024
			5X8MM	200	39730.050.008	8X30MM	100	39730.080.030
2,5X10MM	200	39730.025.010	5X10MM	200	39730.050.010	8X36MM	50	39730.080.036
2,5X12MM	200	39730.025.012	5X12MM	200	39730.050.012	8X40MM	50	39730.080.040
2,5X16MM	200	39730.025.016	5X16MM	200	39730.050.016	8X45MM	50	39730.080.045
2,5X20MM	200	39730.025.020	5X20MM	100	39730.050.020	8X50MM	50	39730.080.050
2,5X24MM	200	39730.025.024	5X24MM	100	39730.050.024	8X60MM	50	39730.080.060
			5X30MM	100	39730.050.030	8X70MM	50	39730.080.070
3X6MM	200	39730.030.006	5X36MM	100	39730.050.036			
3X8MM	200	39730.030.008	5X40MM	100	39730.050.040			
3X10MM	200	39730.030.010						

Grooved pin, half length reverse grooved

ISO 8741
DIN 1474
NEN 2605

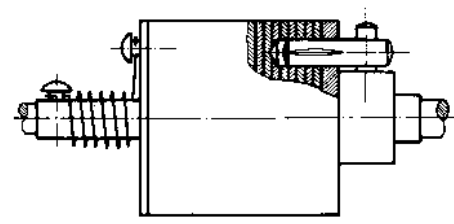
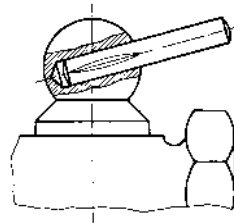
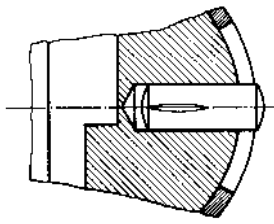


Technical data

d1	Tolerance	c ≈	V
1,5	h9	0,2	1,6
2	h9	0,25	2,85
2,5	h9	0,3	4,25
3	h9	0,4	6,15
4	h11	0,5	10,6
5	h11	0,63	16,5
6	h11	0,8	22,8
8	h11	1	40,5

- V = Shear strength double min. in kN.
- For the hole diameter d₁(nom.) with tolerance field H11 is recommended.
- The nominal length (L) does not include the rounded ends (tolerance js15).

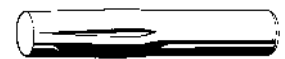
Examples of application



39740 Grooved pin, half length reverse grooved

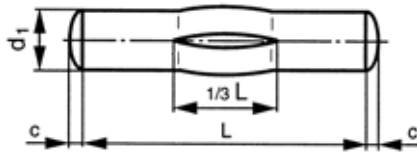
L11F

Material Free-cutting steel
Packaging Standard

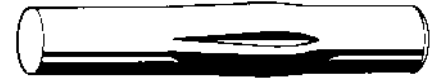


d1 x L	☒	Art.number	d1 x L	☒	Art.number	d1 x L	☒	Art.number
1,5X5MM	200	39740.015.005	3X20MM	200	39740.030.020	6X20MM	100	39740.060.020
1,5X6MM	200	39740.015.006	3X24MM	200	39740.030.024	6X24MM	100	39740.060.024
1,5X8MM	200	39740.015.008	3X30MM	200	39740.030.030	6X30MM	100	39740.060.030
1,5X10MM	200	39740.015.010				6X40MM	100	39740.060.040
1,5X12MM	200	39740.015.012	4X8MM	200	39740.040.008	6X45MM	100	39740.060.045
			4X10MM	200	39740.040.010	6X50MM	100	39740.060.050
2X5MM	200	39740.020.005	4X12MM	200	39740.040.012	6X60MM	100	39740.060.060
2X6MM	200	39740.020.006	4X16MM	200	39740.040.016			
2X8MM	200	39740.020.008	4X20MM	200	39740.040.020	8X12MM	100	39740.080.012
2X10MM	200	39740.020.010	4X24MM	200	39740.040.024	8X16MM	100	39740.080.016
2X12MM	200	39740.020.012	4X30MM	200	39740.040.030	8X20MM	100	39740.080.020
2X16MM	200	39740.020.016	4X36MM	100	39740.040.036	8X24MM	100	39740.080.024
						8X30MM	100	39740.080.030
2,5X6MM	200	39740.025.006	5X8MM	200	39740.050.008	8X36MM	50	39740.080.036
2,5X8MM	200	39740.025.008	5X10MM	200	39740.050.010	8X40MM	50	39740.080.040
2,5X10MM	200	39740.025.010	5X12MM	200	39740.050.012	8X45MM	50	39740.080.045
2,5X12MM	200	39740.025.012	5X16MM	200	39740.050.016	8X50MM	50	39740.080.050
2,5X16MM	200	39740.025.016	5X20MM	100	39740.050.020	8X60MM	50	39740.080.060
			5X24MM	100	39740.050.024	8X70MM	50	39740.080.070
3X6MM	200	39740.030.006	5X30MM	100	39740.050.030			
3X8MM	200	39740.030.008	5X36MM	100	39740.050.036			
3X10MM	200	39740.030.010						
3X12MM	200	39740.030.012	6X12MM	100	39740.060.012			
3X16MM	200	39740.030.016	6X16MM	100	39740.060.016			

Grooved pin, third length center grooved



ISO 8742
 DIN 1475
 NEN 2606

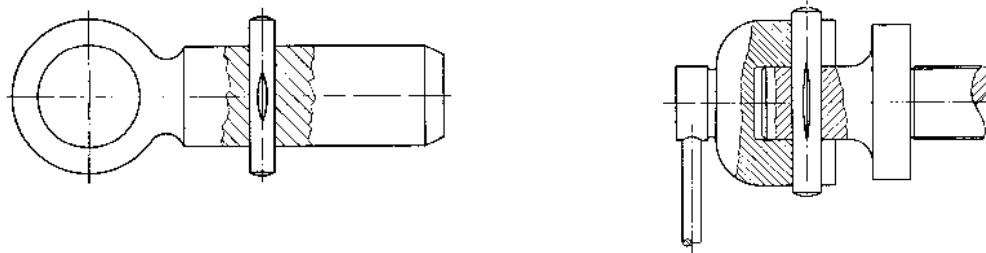


Technical data

d1	Tolerance	c ≈	V
1,5	h9	0,2	1,6
2	h9	0,25	2,85
2,5	h9	0,3	4,25
3	h11	0,4	6,15
4	h11	0,5	10,6
5	h11	0,6	16,5
6	h11	0,8	22,8
8	h11	1	40,5

- V = Shear strength double min. in kN.
- For the hole diameter d₁(nom.) with tolerance field H11 is recommended.
- The nominal length (L) does not include the rounded ends (tolerance js15).

Examples of application



39750 Grooved pin, third length center grooved

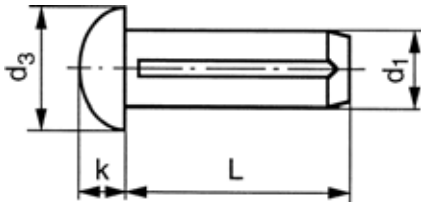
L11F

Material Free-cutting steel
Packaging Standard

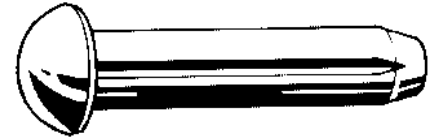


d1 x L	☒	Art.number	d1 x L	☒	Art.number	d1 x L	☒	Art.number
1,5X8MM	200	39750.015.008	3X12MM	200	39750.030.012	6X12MM	100	39750.060.012
1,5X10MM	200	39750.015.010	3X16MM	200	39750.030.016	6X16MM	100	39750.060.016
1,5X16MM	200	39750.015.016	3X20MM	200	39750.030.020	6X20MM	100	39750.060.020
2X6MM	200	39750.020.006	3X24MM	200	39750.030.024	6X24MM	100	39750.060.024
2X10MM	200	39750.020.010	3X30MM	200	39750.030.030	6X30MM	100	39750.060.030
2X12MM	200	39750.020.012	4X12MM	200	39750.040.012	6X36MM	100	39750.060.036
2X16MM	200	39750.020.016	4X16MM	200	39750.040.016	6X40MM	100	39750.060.040
2X20MM	200	39750.020.020	4X20MM	200	39750.040.020	6X45MM	100	39750.060.045
2X24MM	200	39750.020.024	4X24MM	200	39750.040.024	6X50MM	100	39750.060.050
2,5X8MM	200	39750.025.008	4X30MM	200	39750.040.030	6X60MM	100	39750.060.060
2,5X10MM	200	39750.025.010	4X36MM	100	39750.040.036	8X20MM	100	39750.080.020
2,5X12MM	200	39750.025.012	4X40MM	100	39750.040.040	8X24MM	100	39750.080.024
2,5X16MM	200	39750.025.016	5X10MM	200	39750.050.010	8X30MM	100	39750.080.030
2,5X20MM	200	39750.025.020	5X12MM	200	39750.050.012	8X36MM	50	39750.080.036
2,5X24MM	200	39750.025.024	5X16MM	200	39750.050.016	8X40MM	50	39750.080.040
2,5X30MM	200	39750.025.030	5X20MM	100	39750.050.020	8X45MM	50	39750.080.045
3X6MM	200	39750.030.006	5X24MM	100	39750.050.024	8X50MM	50	39750.080.050
3X8MM	200	39750.030.008	5X30MM	100	39750.050.030	8X60MM	50	39750.080.060
3X10MM	200	39750.030.010	5X36MM	100	39750.050.036			
			5X40MM	100	39750.050.040			

Round head grooved pin



ISO 8746
 DIN 1476
 NEN 2460



Technical data

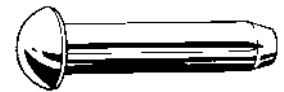
d1	Tolerance	d3	k
1,4	0/ - 0,05	2,4	0,8
1,7 (#DIN)	0/ - 0,05	3	1
2	0/ - 0,05	3,5	1,2
2,5	-	4,4	1,4
2,6 (#DIN)	0/ - 0,075	4,5	1,6
3	0/ - 0,075	5,2	1,8
4	0/ - 0,1	7	2,4
5	0/ - 0,1	8,8	3
6	0/ - 0,1	10,5	3,6

- For the hole diameter d_1 (nom.) with tolerance field H11 is recommended.
- The nominal length (L) is with tolerance js15.

39760 Round head grooved pin

L11F

Material Steel USt 36-2
Packaging Standard



d1 x L	☒	Art.number	d1 x L	☒	Art.number	d1 x L	☒	Art.number
1,4X3MM	200	39760.014.003	2,6X4MM	200	39760.026.004	4X12MM	200	39760.040.012
1,4X4MM	200	39760.014.004	2,6X5MM	200	39760.026.005	4X15MM	200	39760.040.015
1,4X6MM	200	39760.014.006	2,6X6MM	200	39760.026.006			
			2,6X8MM	200	39760.026.008	5X8MM	200	39760.050.008
1,7X3MM	200	39760.017.003	2,6X10MM	200	39760.026.010	5X10MM	200	39760.050.010
1,7X4MM	200	39760.017.004				5X12MM	200	39760.050.012
1,7X5MM	200	39760.017.005	3X4MM	200	39760.030.004	5X15MM	200	39760.050.015
1,7X6MM	200	39760.017.006	3X5MM	200	39760.030.005	5X20MM	200	39760.050.020
			3X6MM	200	39760.030.006	5X25MM	200	39760.050.025
2X3MM	200	39760.020.003	3X8MM	200	39760.030.008			
2X4MM	200	39760.020.004	3X10MM	200	39760.030.010	6X10MM	200	39760.060.010
2X5MM	200	39760.020.005	3X12MM	200	39760.030.012	6X12MM	200	39760.060.012
2X6MM	200	39760.020.006	3X15MM	200	39760.030.015	6X15MM	200	39760.060.015
2X8MM	200	39760.020.008				6X20MM	200	39760.060.020
2X10MM	200	39760.020.010	4X6MM	200	39760.040.006	6X25MM	200	39760.060.025
			4X8MM	200	39760.040.008			
2,6X3MM	200	39760.026.003	4X10MM	200	39760.040.010			