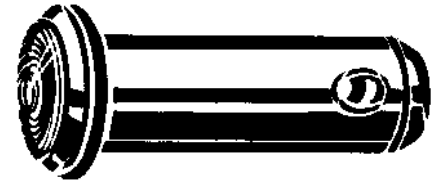
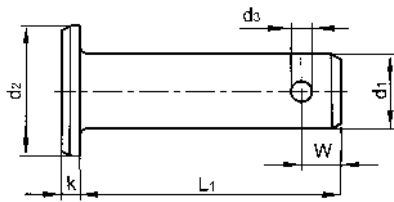


**Clevis pin with head and split pin hole**

DIN 1434



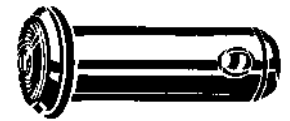
**Technical data**

d1 (h11)	d2 (h14)	d3 (H14)	k (js14)	W (min.)
4	6	1	1	1,8
5	8	1,6	1,5	2
6	9	1,6	1,5	2,5
8	12	2	2	3
10	14	3,2	2	4
12	17	4	3	5
14	19	4	3	5
16	21	4	3	5

**39797 Clevis pin with head and split pin hole**

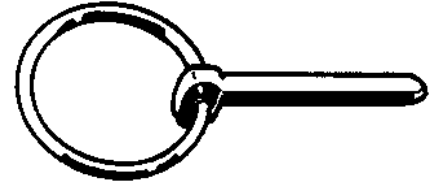
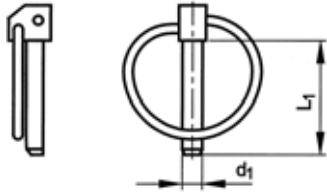
L11F

**Material** Steel  
**Surface treatment** Zinc plated  
**Packaging** Standard



d1 x L1	☒	Art.number	d1 x L1	☒	Art.number	d1 x L1	☒	Art.number
4X12MM	100	<a href="#">39797.040.012</a>	8X22MM	100	<a href="#">39797.080.022</a>	14X40MM	25	<a href="#">39797.140.040</a>
5X14MM	100	<a href="#">39797.050.014</a>	10X28MM	50	<a href="#">39797.100.028</a>	16X45MM	10	<a href="#">39797.160.045</a>
6X18MM	100	<a href="#">39797.060.018</a>	12X35MM	25	<a href="#">39797.120.035</a>			

## Linch pin

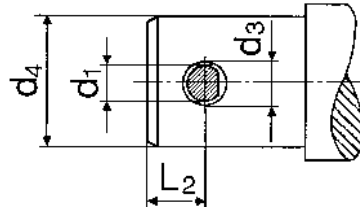


### Technical data

d1	4,5	6	7	8	9,5	10	11
<b>Assembly data</b>							
d <sub>3</sub> (H11)	5	6,2	8	8,5	10	10,5	12
d <sub>4</sub> (max.)	25	32	32	32	32	32	32
L <sub>2</sub>	8	10	12	12	14	14	14
Form of shaft	a	a	b	b	b	b	b

- Form of shaft a = round, b = flattened on one side.

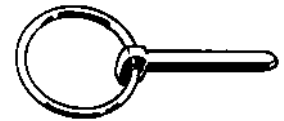
### Assembly data



### 39660 Linch pin

L11E

**Material** Spring steel  
**Surface treatment** Zinc plated yellow passivated  
**Packaging** Standard



d1 x L1	☒	Art.number	d1 x L1	☒	Art.number	d1 x L1	☒	Art.number
4,5x40MM	25	<a href="#">39660.045.001</a>	8x40MM	25	<a href="#">39660.080.001</a>	11x40MM	10	<a href="#">39660.110.001</a>
6x40MM	25	<a href="#">39660.060.001</a>	9,5x40MM	25	<a href="#">39660.095.001</a>			
7x40MM	25	<a href="#">39660.070.001</a>	10x40MM	10	<a href="#">39660.100.001</a>			

- Warning: electro-galvanizing of these products may cause hydrogen embrittlement.