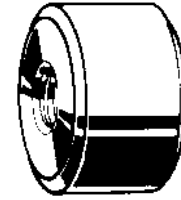
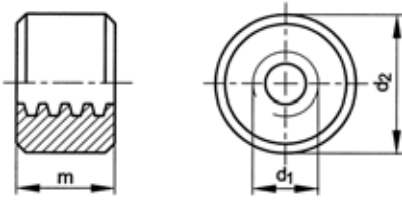


Round nut Tr



Technical data

d1	d2	m	d1	d2	m	d1	d2	m
Tr10 (#DIN)	22	15	Tr22	45	33	Tr36	75	54
Tr12	26	18	Tr24	50	36	Tr40	80	60
Tr14 (#DIN)	30	21	Tr26	50	39	Tr44	80	66
Tr16	36	24	Tr28	60	42	Tr50	90	75
Tr18	40	27	Tr30	60	45	Tr60	100	90
Tr20	45	30	Tr32	60	48			

- Trapezoidal thread acc. to DIN 103.

Article groups


Thread	Material	Packaging	Code	Page
Tr	Free-cutting steel	Standard	20470	4-23
Tr	Free-cutting steel	left hand	20476	4-23
Tr	St.St. A1	Standard	51170	4-23

20470	Round nut Tr	G05A
Thread	Trapezoidal thread	
Material	Free-cutting steel	
Packaging	Standard	

d1 x P	☒	Art.number	d1 x P	☒	Art.number	d1 x P	☒	Art.number
Tr10X3	10	20470.100.003	Tr22X5	4	20470.220.005	Tr36X6	2	20470.360.006
Tr12X3	10	20470.120.003	Tr24X5	4	20470.240.005	Tr40X7	2	20470.400.007
Tr14X4	6	20470.140.004	Tr26X5	2	20470.260.005	Tr44X7	2	20470.440.007
Tr16X4	6	20470.160.004	Tr28X5	2	20470.280.005	Tr50X8	2	20470.500.008
Tr18X4	4	20470.180.004	Tr30X6	2	20470.300.006	Tr60X9	2	20470.600.009
Tr20X4	4	20470.200.004	Tr32X6	2	20470.320.006			

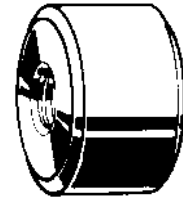
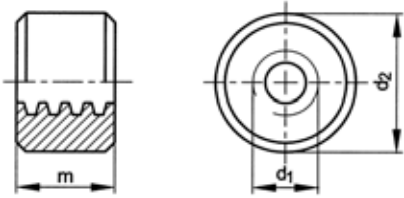
20476	Round nut left hand thread	G05A
Thread	Trapezoidal thread	
Material	Free-cutting steel	
Packaging	Standard	

d1 x P	☒	Art.number	d1 x P	☒	Art.number	d1 x P	☒	Art.number
Tr12X3	6	20476.120.003	Tr24X5	2	20476.240.005	Tr36X6	2	20476.360.006
Tr16X4	4	20476.160.004	Tr30X6	2	20476.300.006	Tr40X7	2	20476.400.007
Tr20X4	2	20476.200.004	Tr32X6	2	20476.320.006			

51170	Round nut Tr	R09A
Thread	Trapezoidal thread	
Material	Stainless steel A1	
Packaging	Standard	

d1 x P	☒	Art.number	d1 x P	☒	Art.number	d1 x P	☒	Art.number
Tr12X3	1	51170.120.003	Tr20X4	1	51170.200.004	Tr30X6	1	51170.300.006
Tr16X4	1	51170.160.004	Tr24X5	1	51170.240.005			

Round nut



Technical data

d1	d2	m
Tr12	27	18
Tr16	36	32
Tr20	47	40
Tr24	52	48
Tr30	62	45
Tr36	75	54
Tr40	80	80

- Trapezoidal thread acc. to DIN 103.

20474 Round nut		G05A
Thread	Trapezoidal thread	
Material	Bronze Cu4	
Packaging	Standard	

d1 x P	☒	Art.number	d1 x P	☒	Art.number	d1 x P	☒	Art.number
Tr12X3	6	20474.120.003	Tr24X5	2	20474.240.005	Tr40X7	1	20474.400.007
Tr16X4	4	20474.160.004	Tr30X6	1	20474.300.006			
Tr20X4	2	20474.200.004	Tr36X6	1	20474.360.006			